

# BROOK TAVERNER

SINCE 1912

## SHIRT & BLOUSE COLLECTION COTTON RICH

### LIGURIA BLOUSE SEMI FITTED - 2240



#### DESCRIPTION

Semi fitted, short sleeve, double button fastening.

**COMMODITY CODE:** 62063000900

#### FABRIC SPECIFICATION

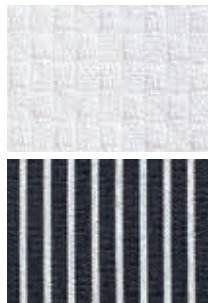
**Composition:**

60% Cotton, 40% Polyester - easy iron

**Weight:** 120gm / Lightweight

#### SIZES

6 - 24 regular



#### COLOURS

Available in 2 fabric colours

A - White waffle weave

C - Black/white stripe

#### WASHCARE INSTRUCTIONS



Wool  
Cycle



#### GARMENT MEASURED FLAT & FASTENED

Collar Size	6	8	10	12	14	16	18	20	22	24
1/2 Bust	43	45.5	48	50.5	53	55.5	58	60.5	63	65.5
Centre Back Length (Neck to Hem)	63	64	65	66	67	68	69	70	71	72
Sleeve Length (Crown to Cuff)	61	61	62	62	62.5	62.5	63	63	63.5	63.5

Working, together.

[www.brooktaverner.com](http://www.brooktaverner.com)